

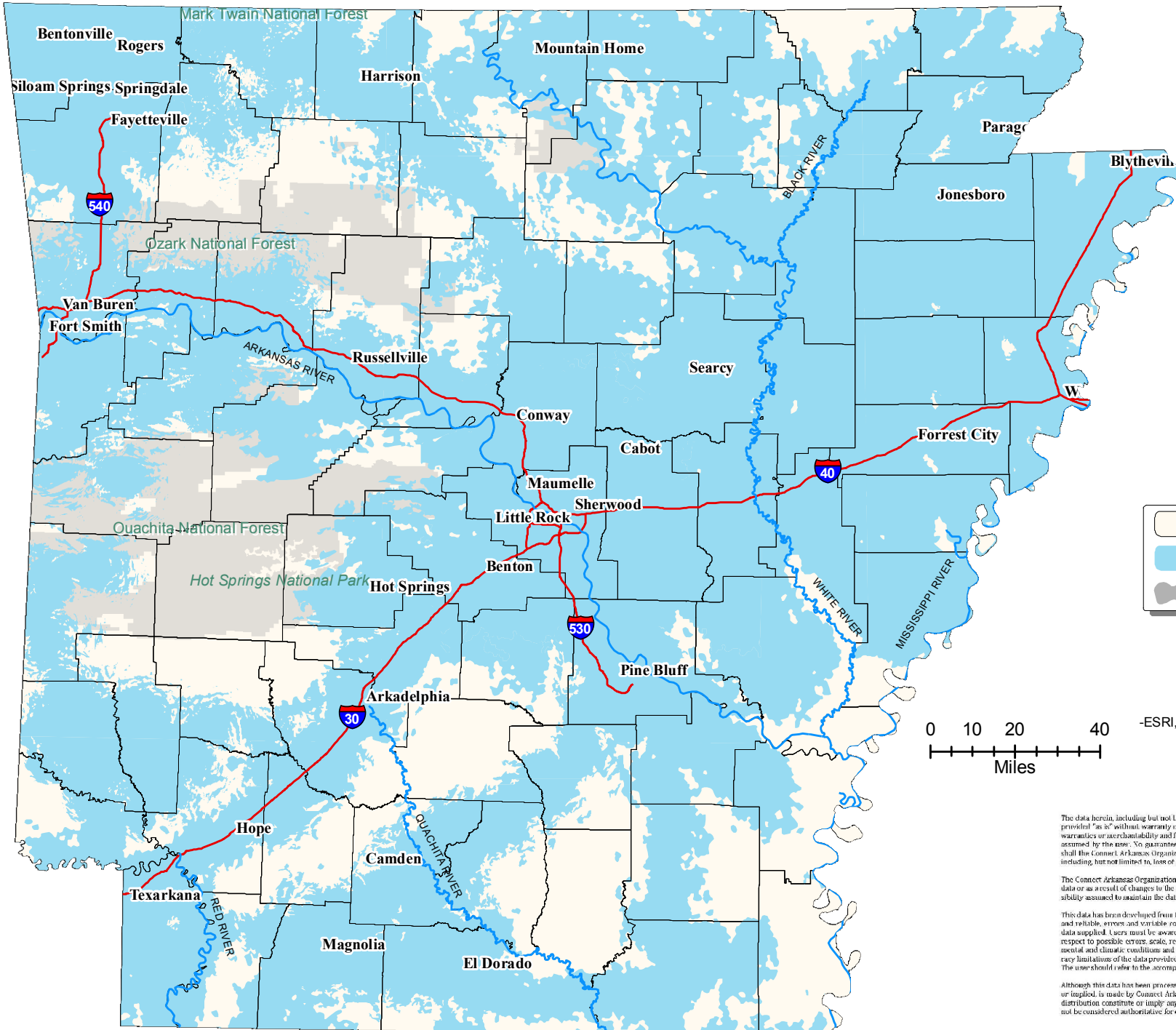
Points to consider when viewing this map:

- It should be noted that, consistent with industry standards, the quality of the data provided on these maps is iterative in nature and reflects the most current data available from providers.
- These maps reflect residential/small business access only and are not to be used to determine internet speeds for purposes of economic development/recruiting. Service providers have assured Connect Arkansas that high-speed internet access can be extended to any site in Arkansas for purposes of industrial development, etc.
- Republishing of maps is not allowed without the express written permission of Connect Arkansas. Please contact either Les Lane or Sam Walls III at Connect Arkansas (800) 216-7237.
- To improve the quality of our data, which is currently being compiled on the household level, please visit www.connect-arkansas.org and complete the *"Broadband is not available to me"* form or call Emerson Evans at Connect Arkansas (800) 216-7237.
- No guarantee of accuracy of the coverage shown is granted, nor is any responsibility for reliance thereon assumed by Connect Arkansas.
- Distribution of this map is intended for informational purposes only and should not be considered authoritative for engineering, legal and other site-specific uses.



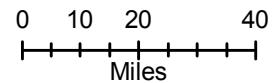
Arkansas Mobile* Wireless Broadband Availability

May 1, 2009 v1.0



	Unservd
	384kb/s - 3.0 mb/s
	National Forests & Parks

*Includes, but not limited to:
-EVDO Rev-A
-3G



Source:
-ESRI, MapInfo, Arkansas Broadband Providers

Author:
Connect Arkansas
www.connect-arkansas.org

Legal Disclaimer
The data herein, including but not limited to geographic data, tabular data, analytical data, electronic data structures or files, are provided "as is" without warranty of any kind, either expressed or implied, or statutory, including, but not limited to, the implied warranties or merchantability and fitness for a particular purpose. The entire risk as to the quality and performance of the data is assumed by the user. No guarantee of accuracy is given, nor is any responsibility for reliance thereon assumed. In no event shall the Connect Arkansas Organization, be liable for direct, indirect, incidental, consequential or special damages of any kind, including, but not limited to, loss of anticipated profits or benefits, arising out of use of or reliance on the data.

The Connect Arkansas Organization does not accept liability for any damages or misrepresentation caused by inaccuracies in the data or as a result of changes to the data caused by system transfers or other transformations or conversions, nor is there responsibility assumed to maintain the data in any manner or form.

This data has been developed from the best available sources. Although efforts have been made to ensure that the data is accurate and reliable, errors and variable conditions originating from physical sources used to develop the data may be reflected in the data supplied. Users must be aware of these conditions and bear responsibility for the appropriate use of the information with respect to possible errors, scale, resolution, rectification, positional accuracy, development methodology, time period, environmental and climatic conditions and other circumstances specific to this data. The user is responsible for understanding the accuracy limitations of the data provided herein. The burden for determining fitness for use lies entirely with the user. The user should refer to the accompanying metadata notes for a description of the data and data development procedures.

Although this data has been processed successfully on computers, at the Connect Arkansas Organization, no guarantee, expressed or implied, is made by Connect Arkansas Organization regarding the use of these data on any other system, nor does the act of distribution constitute or imply any such warranty. Distribution of these data is intended for information purposes and should not be considered authoritative for engineering, legal and other site-specific uses.